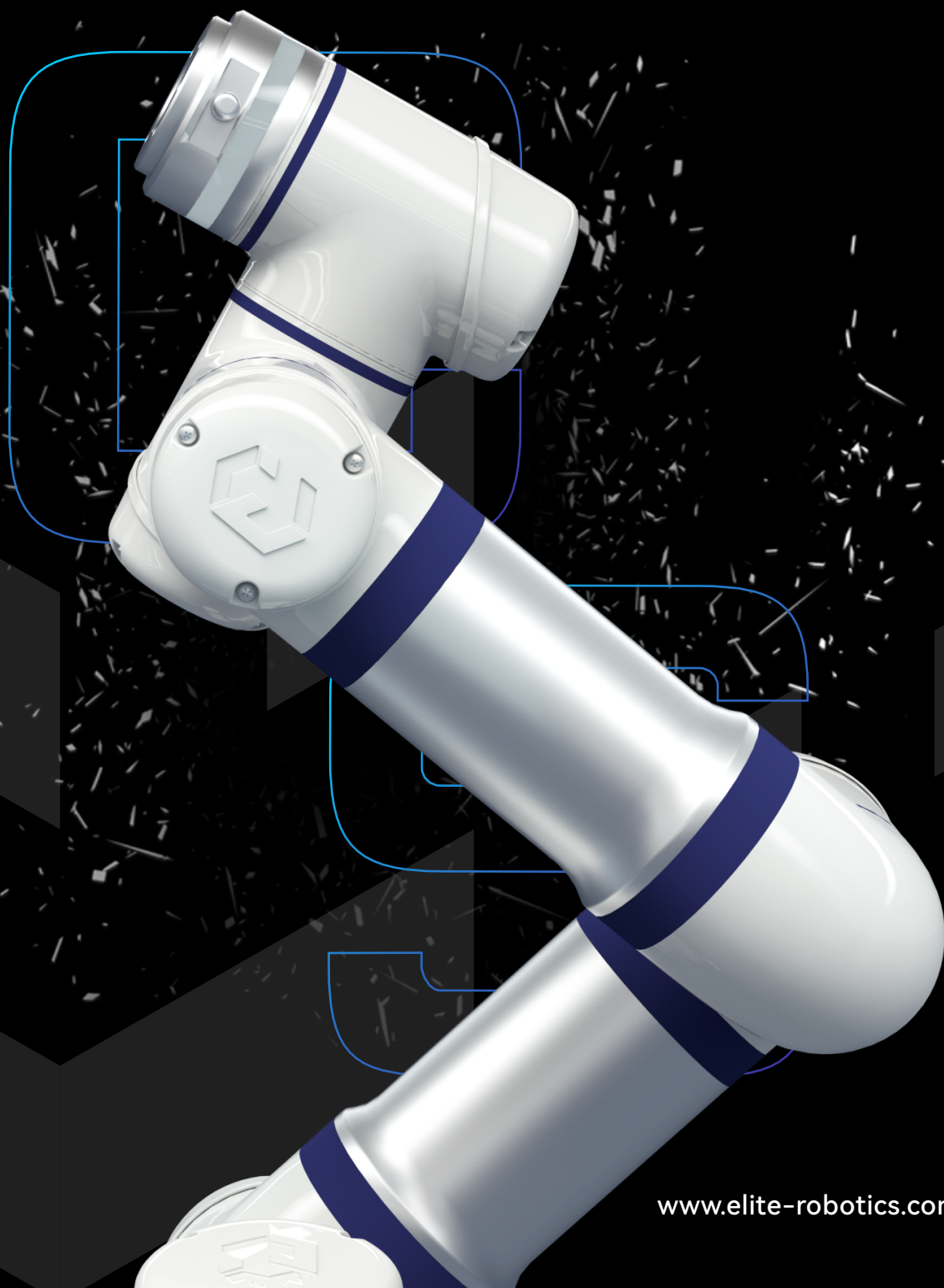


CS SERIES

COBOT SUPERIOR



5
E
I
R
E
S
S
S

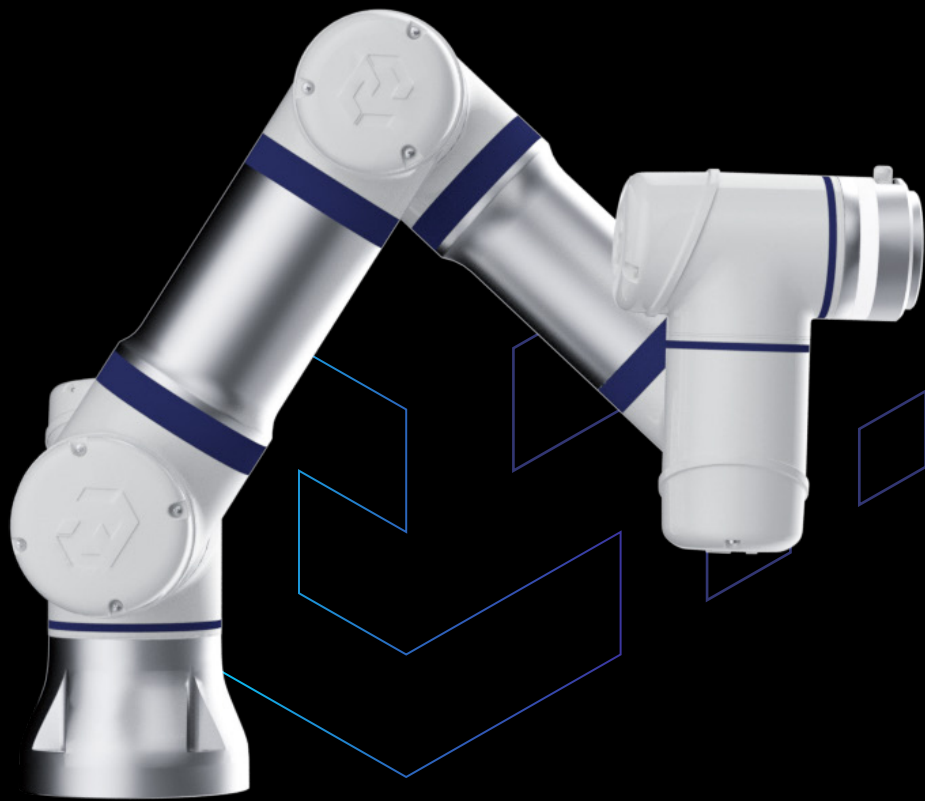


New CS Series

COBOT **S**UPERIOR

SUPERIOR

High-speed system bus, more I/O ports (24 DI, 24 DO, 2 AI, 2 AO);
stronger power supply capacity; more communication interfaces
(3 Ethernet interfaces, 1 serial port).



The CS Series perfectly adheres the 4S Principle, which is at the base of every Elite Robots creation: Safe, Scalable, Simple and Sustainable.

- **SAFE**

Enhanced and comprehensive safety functions covering, among others, position, speed, force, power and momentum limitations, fully designed according to ISO 13849-1 Cat3 PLd standard. Pinch point-free joints design.

- **SUSTAINABLE**

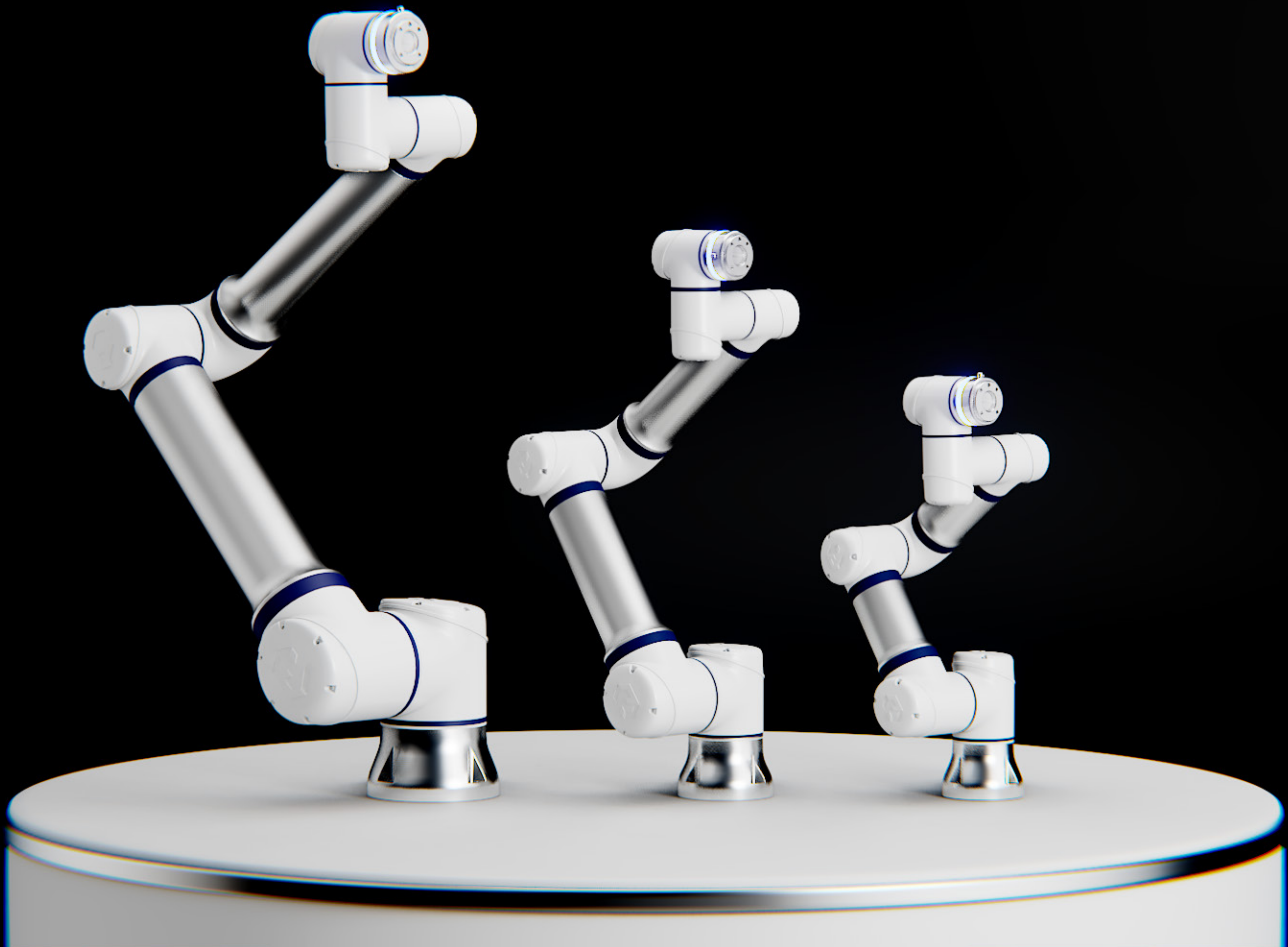
Platformized hardware and software architecture for maximum extendibility. Constant software upgrade during product life-cycle, full-comprehensive documentation and lifetime technical support.

- **SIMPLE**

User-friendly and open Python-based graphical interface. Easy-to-maintain integrated motherboard and quickly replaceable joints.

- **SCALABLE**

Modular software framework supporting extendable development and customizable commands and interfaces. Extendible Java-based architecture. Multiple communication protocols (TCP/IP, MODBUS TCP/RTU, EtherNet/IP, Profinet)

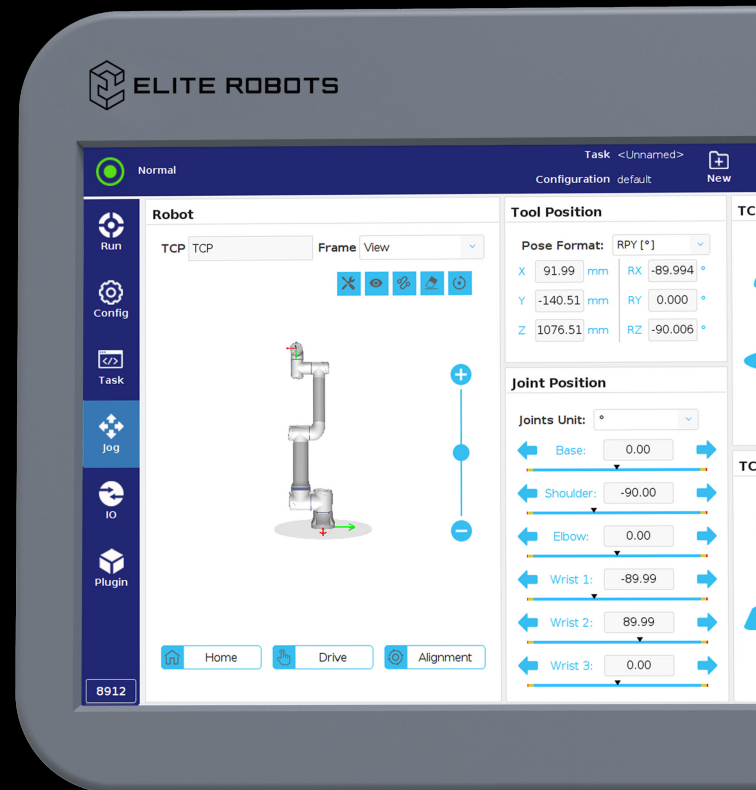




Fully upgraded

New Software & Hardware Architecture

- Elite Robots CS Series adopts a **high number of original patented technologies** to further enhance the safety of human-machine collaboration. The product design complies with **EN ISO 10218-1, EN ISO 13849 Cat3 PLd and ISO/TS 15066** standards.
- Intuitive and user-friendly graphical interface with flow chart software.
- **New Python-based script language** for rich, open and easy programming.
- **Integrated motherboard supporting more I/O** (24 DI, 24 DO, 2 AI, 2 AO) and high-speed system bus.
- Upgraded joints design for easier maintenance and enhanced safety. **Each joint can be quickly replaced in only 20 minutes.**
- **Java-based modular architecture** supporting third-party plug-ins (including for instructions and GUI) for enhancing and customizing the robot functionalities.



COBOT SUPERIOR CS SERIES

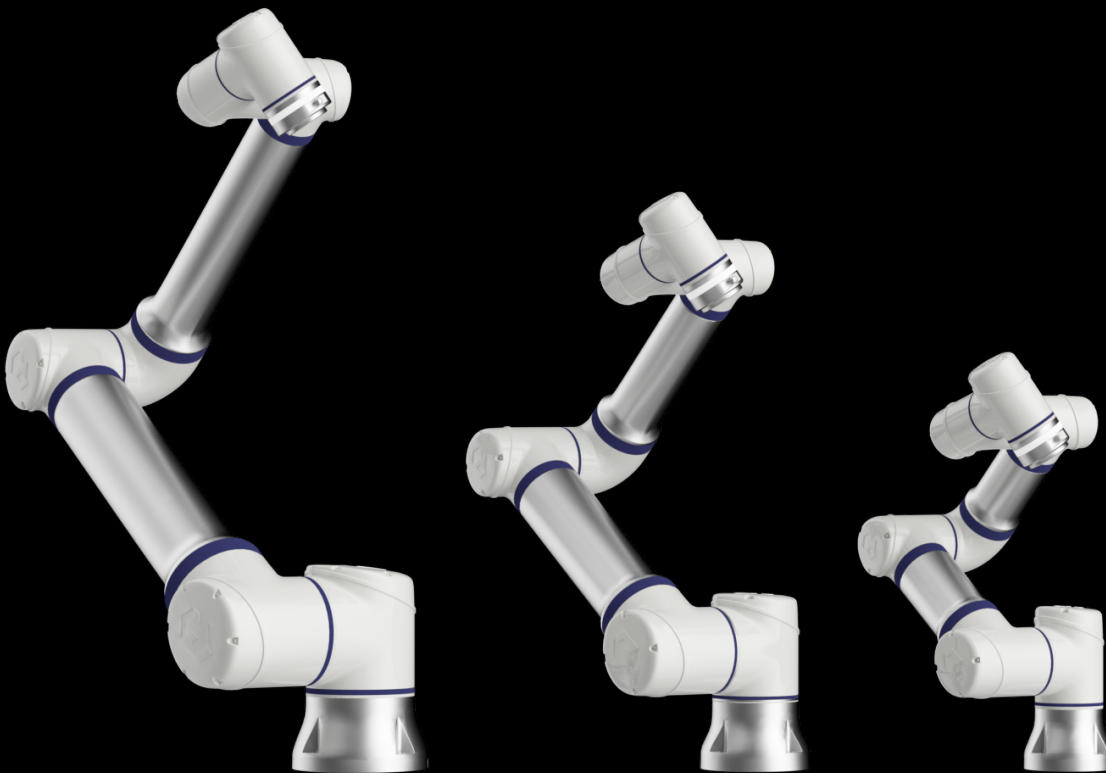
Take Your Productivity to the Next Level

IP54 protection rating
(robot, controller and teach pendant)

Configurable flange IO with up
to 3A power supply

Multi-color flange ring indicator

Quick and easy joints replacement
with pinch-point free design.



The new CS series is the result of Elite Robots' **entirely in-house R&D** and strongly innovates in terms of safety, ease of use and scalability. Built on the “platformization” concept, the CS (Cobot Superior) Series embodies the flexibility and openness of a new generation of collaborative robots which allows expandability, customization and easy integration by users, developers and end-effectors.

User-friendly & Powerful Controller

More powerful computing resources (independent cores for control and extension). Stronger communication capabilities with 3 Ethernet interfaces (1Gig-E).

Extendible and customizable GUI with flow chart software.

Python-based script language for quick learning and easy programming.

One-click software upgrade.

More I/O ports (24 DI, 24 DO, 2 AI, 2 AO).

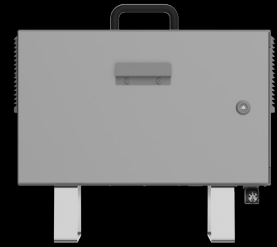


The newly released CS series consists of 3 models, **CS63, CS66 and CS12**, for **light, medium and high payloads**, which can be used for a wide variety of industrial robot applications across all industrial sectors (**including automotive, 3C electronics, metal processing, home appliances, power and new retail**). The CS Series cobots applications include (but are not limited to) material handling, visual inspection, assembly and tightening, machine tool loading and unloading, packaging and palletizing, welding and grinding.



Robotic Arm

		CS63	CS66	CS612
Degrees of freedom		6		
Weight		16.5kg	22kg	37kg
Payload		3kg	6kg	12kg
Working radius		624mm	914mm	1304mm
Repeatability		±0.02mm	±0.03mm	±0.05mm
Joints range		±360°		
Max joints speed	Joint 1	180°/s	150°/s	120°/s
	Joint 2	180°/s	150°/s	120°/s
	Joint 3	180°/s	180°/s	150°/s
	Joint 4	230°/s	230°/s	180°/s
	Joint 5	230°/s	230°/s	180°/s
	Joint 6	230°/s	230°/s	180°/s
Typical TCP speed		1.5 m/s		
IP rating		IP54		
Ambient temperature		0-50 °C		
Relative humidity		<90% (No Condensation)		
Power consumption		150w	250w	500w
Mounting		Any angle		
High speed digital input		4		
Tool I/O		4 x DIO, 1 x AI, 1x AO		
Tool I/O power supply		12 V/24 V, 3A(three pin mode), 2A (two pin mode), 1A (one pin mode)		
Tool communication		RS485		
Footprint		Ø 128 mm	Ø 150 mm	Ø 190 mm
Cable length		5.5 m		



Controller

Cabinet size (WxHxL)	505mm x 432mm x 257mm
Weight	14 kg
Material	Aluminum, Steel
IP rating	IP54
I/O interface	24 x DI (8 x DI Configurable), 24 x DO (8 x DO Configurable), 2 x AI, 2 x AO
I/O power supply	Voltage: 24V; Current: 3A (internal power), 6A (external power)
Communication	3 Ethernet, 1 RS485, TCP/IP, MODBUS TCP/RTU, EtherNet/IP, Profinet
Power supply	100-240 VAC, 50-60 Hz
Ambient temperature	0-50 °C
Relative humidity	<90% (No Condensation)

*Ethernet IP upcoming



Teach Pendant

Screen display size	12.1"
Resolution	1280 x 800 pixels
Material	Aluminum, Plastic
Weight	2.1 kg
Cable length	5.5 m
IP rating	IP54
Ambient temperature	0-50 °C
Relative humidity	<90% (No Condensation)



**Available for Pre-order
from [July 2022](#)**

REVIEW



CONTACT US

contact@elibot.com

www.elite-robotics.com



LinkedIn



Youtube



Facebook



Twitter



GitHub